

Alcohol-Related Hospital Statistics Scotland - 2017/18 Dashboard

Published 20 November 2018

GENERAL ACUTE ADMISSIONS

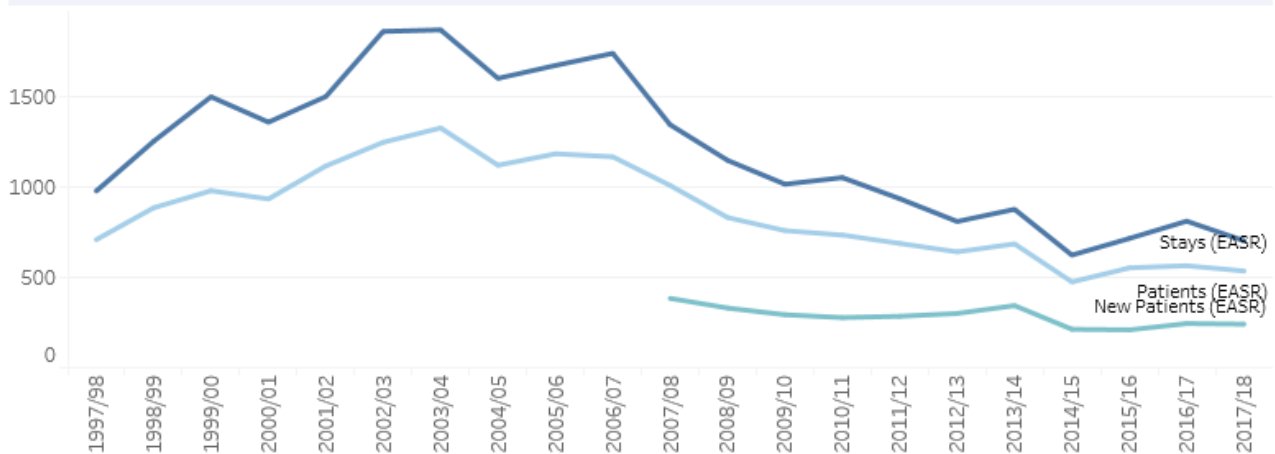
In 2017/18 there were 196 alcohol-related hospital admissions (stays) in general acute hospitals in the Western Isles. These relate to 147 Western Isles residents who had at least one admission to hospital with an alcohol-related condition. Of these people, 60 were admitted for an alcohol-related admission for the first time or had not been admitted to hospital for an alcohol-related admission in the previous 10 years.

In 2017/18 the alcohol-related stay rate per 100,000 population in general acute hospitals in the Western Isles was 697.1, a 14% decrease compared to the previous year (805.8).

NHS Western Isles

All alcohol conditions (General acute)

European Age-Sex Standardised Rates (EASR) per 100,000 population

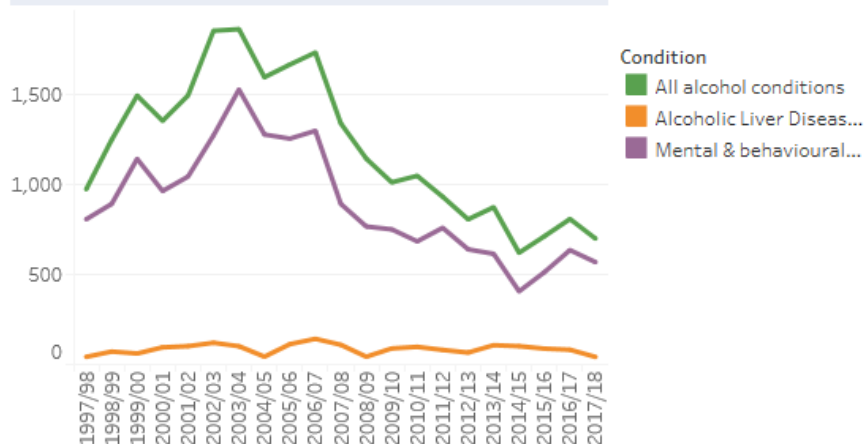


The condition most commonly recorded during alcohol-related hospital admissions in the Western Isles is 'Mental and behavioural disorders due to the use of alcohol', which covers a range of issues from intoxication, dependence, withdrawal and harmful use. This accounts for 81% of the admissions while the toxic effects of alcohol and alcoholic liver disease account for 7% and 6% respectively.

NHS Western Isles: Stays (General acute)

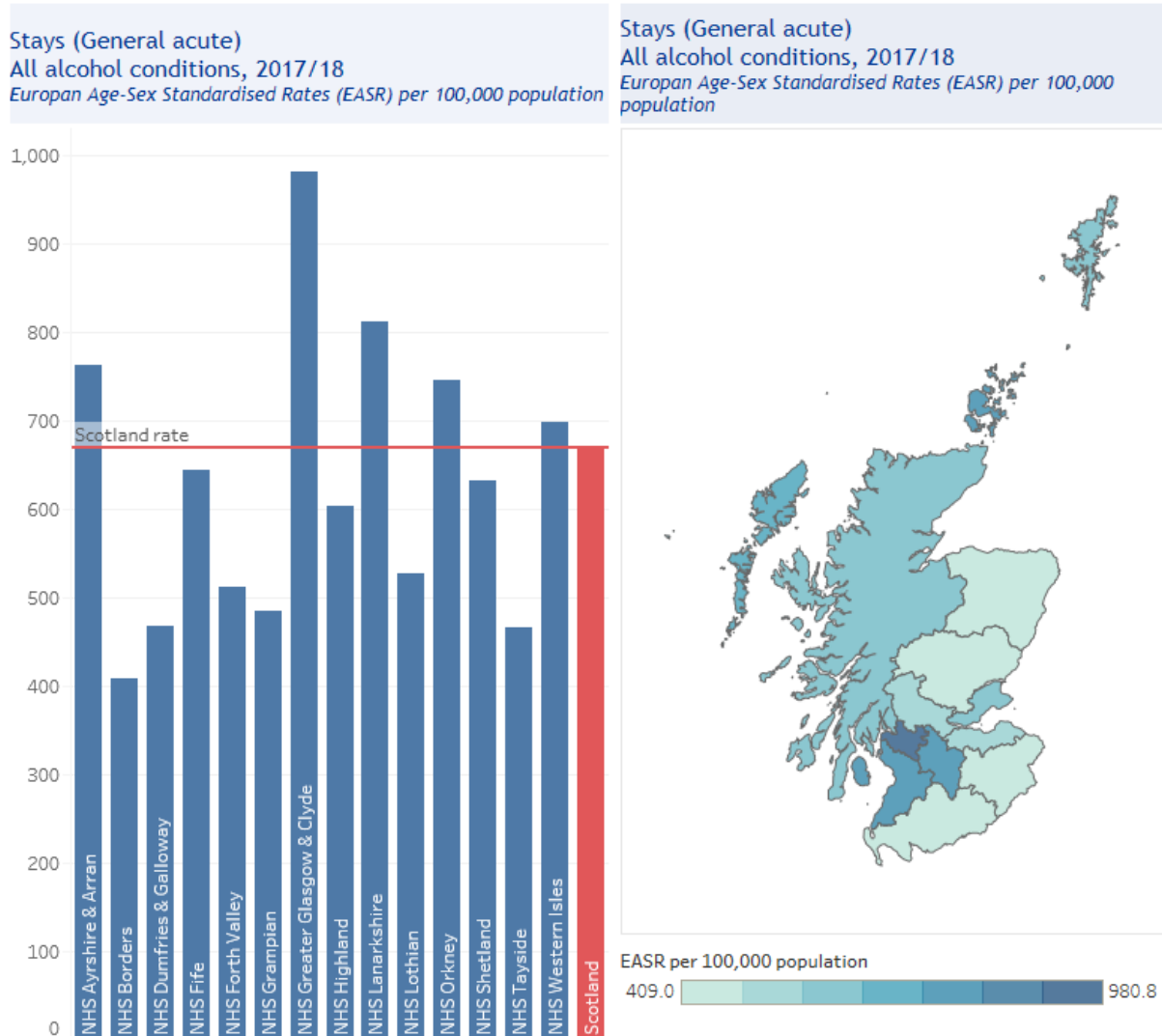
Main conditions

EASR per 100,000 population



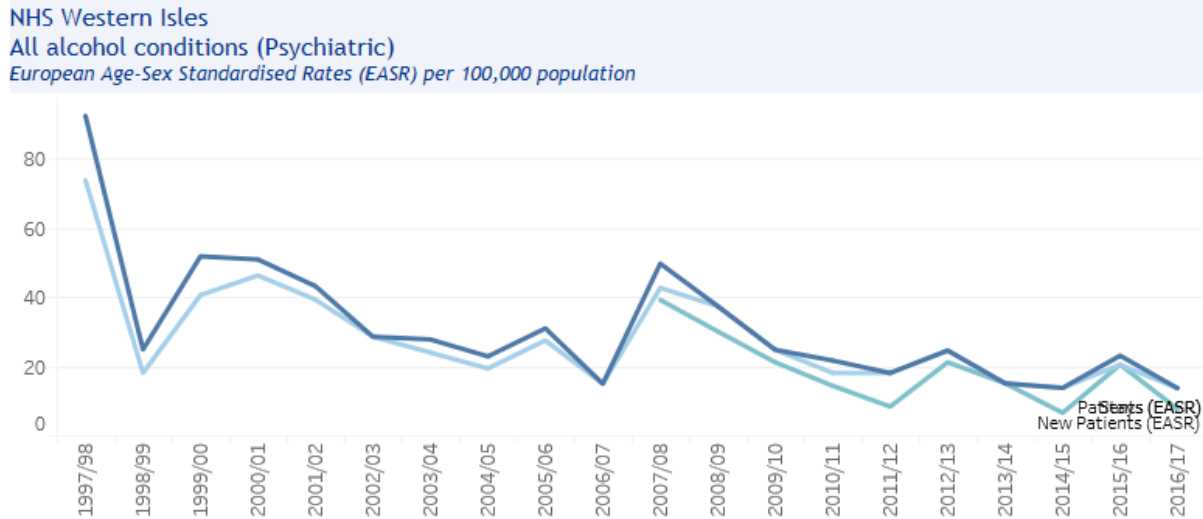
All images are snapshots taken from the ISD interactive dashboard

In 2017/18 the rate of alcohol related hospital admissions in general acute hospitals in the Western Isles was the 5th highest in Scotland. Although there has been a decrease in the rate of admissions it still remains above the national average.

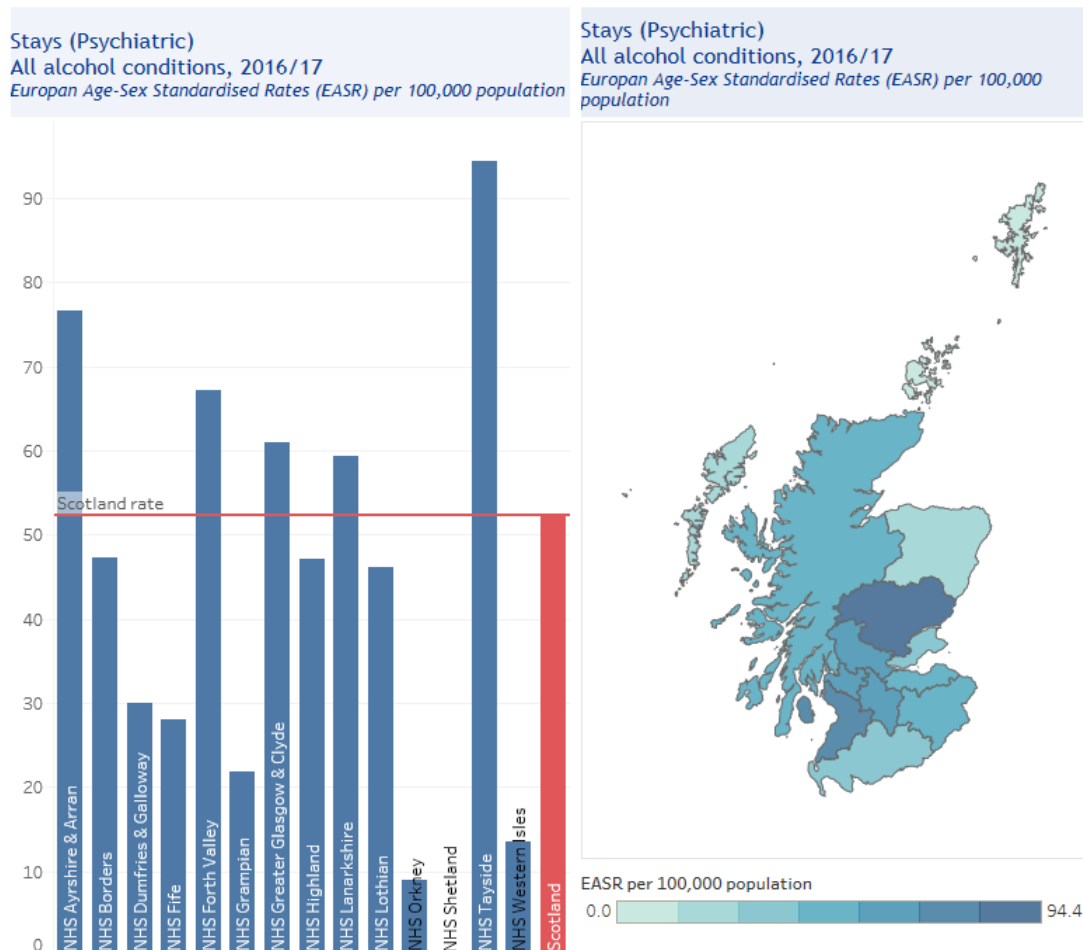


PSYCHIATRIC ADMISSIONS

In 2016/17 the alcohol-related stay rate per 100,000 population in psychiatric settings in the Western Isles was 13.6, a 41% decrease compared to the previous year (23.0). Each patient had on average only one stay during the year.



In 2016/17 the rate of alcohol related hospital admissions in psychiatric settings in the Western Isles was the 3rd lowest in Scotland (with the rate in Orkney and Shetland being lower). Year on year the rate of admissions remains below the national average, which was 52.4 in 2016/17.



All images are snapshots taken from the ISD interactive dashboard